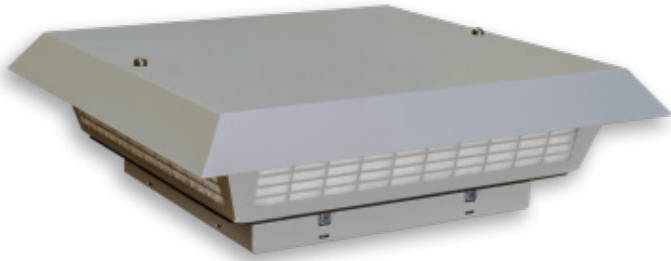


# 5CF TOP MOUNT FANS



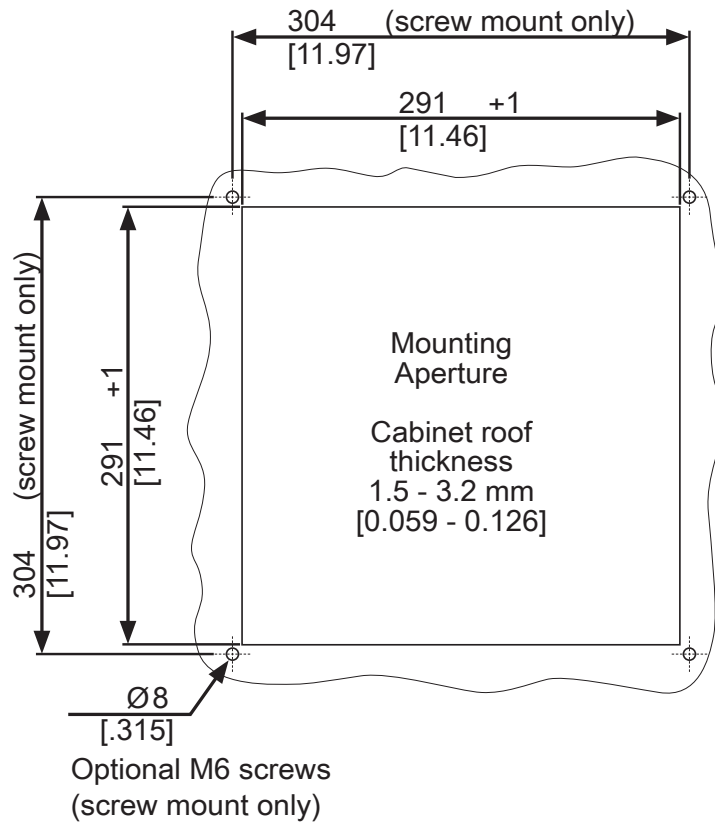
## Description

<b>Color:</b>	RAL 7035
<b>Material:</b>	Mild steel, powder coated
<b>Ingress protection:</b>	NEMA 12
<b>Approvals:</b>	CE, cURus UL Recognized Type 12
<b>Min enclosure depth:</b>	≥ 14

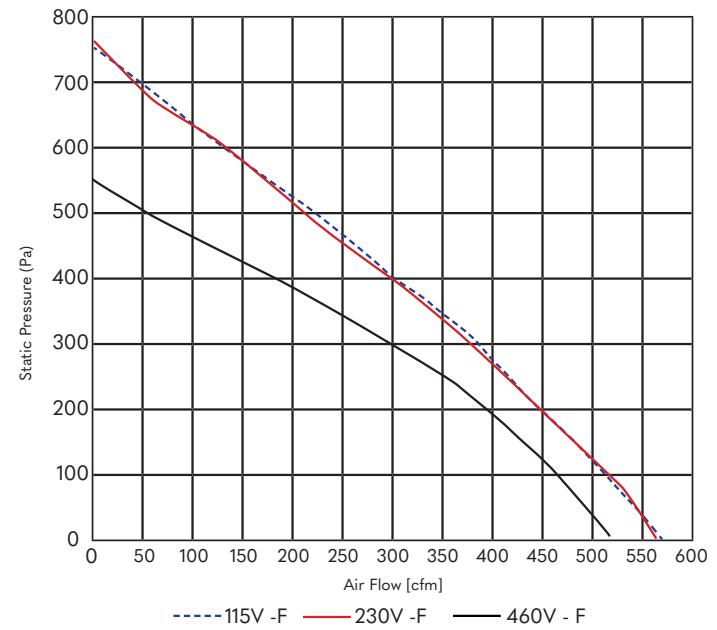
## Technical data for:

	SCE-N12TM5CF120V	SCE-N12TM5CF230V	SCE-N12TM5CF460V3
<b>Model number:</b>	6085A3000SG	6085A4000SG	6085A9000SG
<b>Operating temperature range:</b>	14°F - + 131°F	14°F - + 131°F	14°F - + 131°F
<b>Air volume flow:</b>	570 cfm	570 cfm	520 cfm
<b>Static pressure:</b>	750 Pa	750 Pa	550 Pa
<b>Mounting:</b>	Top mounted	Top mounted	Top mounted
<b>Dimension H x W x D:</b>	5.8 x 18 x 18 inch	5.8 x 18 x 18 inch	5.8 x 18 x 18 inch
<b>Weight:</b>	14.1 lbs	14.1 lbs	14.1 lbs
<b>Cut out dimensions:</b>	11.46 x 11.46 inch	11.46 x 11.46 inch	11.46 x 11.46 inch
<b>Voltage / Frequency:</b>	120 V ~ 60 Hz	230 V ~ 50/60 Hz	400/460 V - 50/60 Hz 3~
<b>Rated current:</b>	1.9 A	Max 1.1 A	Max 0.33 A
<b>Power consumption:</b>	225 W	Max 234 W	Max 230 W
<b>Degree of separation:</b>	85% - DIN 24185	85% - DIN 24185	85% - DIN 24185
<b>Filter class:</b>	G3	G3	G3
<b>Noise level:</b>	76 dB(A)	76 dB(A)	76 dB(A)
<b>Connection:</b>	4 - Push pin connectors	4 - Push pin connectors	4 - Push pin connectors
<b>Minimum tightening torque:</b>	45 in-lb	45 in-lb	45 in-lb
<b>Minimum exhaust filter intake:</b>	2 x SCE-N12FGA1010(LG) (model number 400040000)	2 x SCE-N12FGA1010(LG) (model number 400040000)	2 x SCE-N12FGA1010(LG) (model number 400040000)

## CUTOUT DIMENSIONS



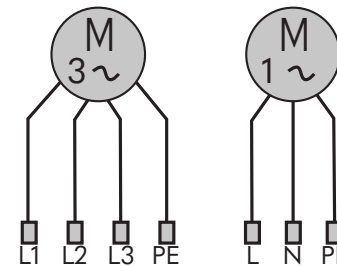
## PERFORMANCE GRAPH



## WIRE DIAGRAM

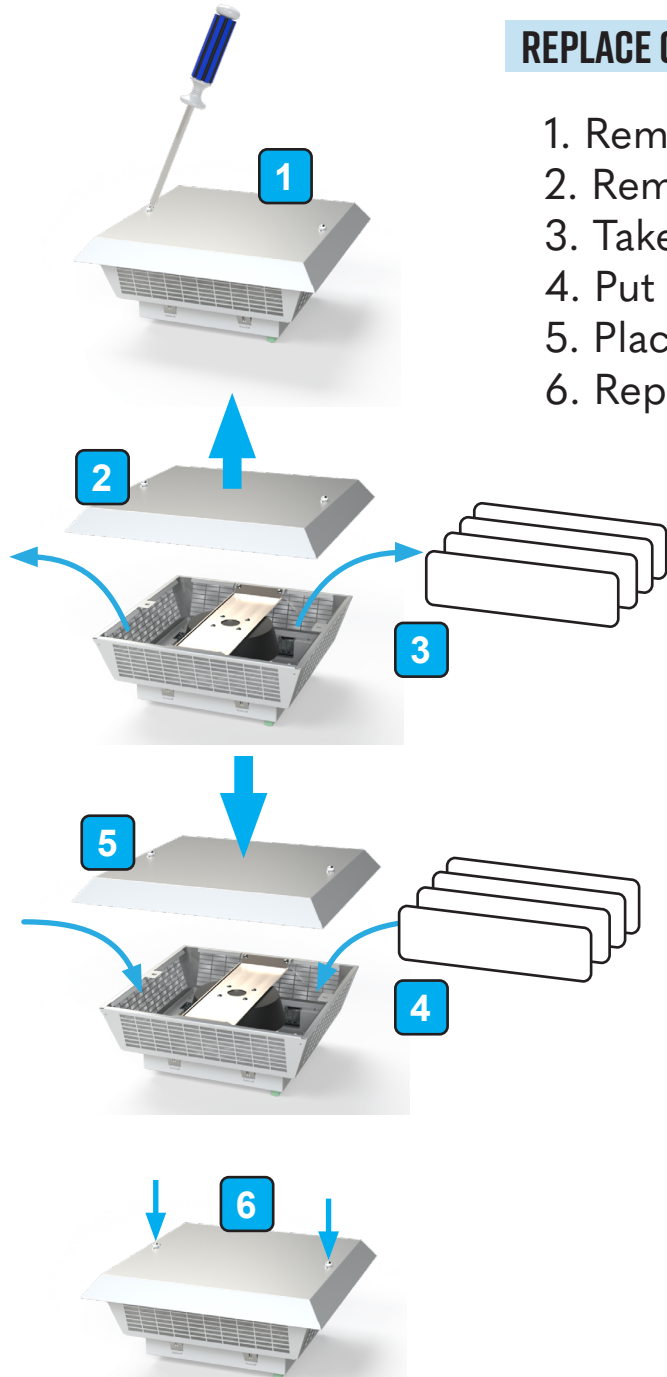
### Electrical connection to the top mount fan filters

The feed voltage and frequency must be according to the rated values stated on the name plates. The electrical connection must be carried out according to the local norms and safety regulations which govern the use of electrical material. Electrical connections and repairs must be carried out by qualified personnel only.



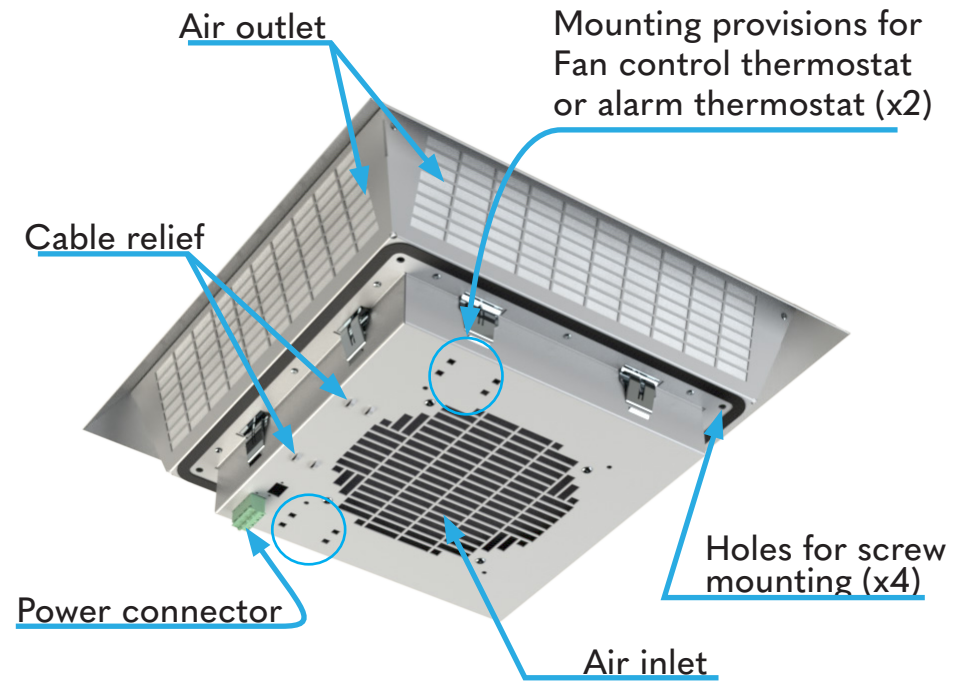
## REPLACE OLD FILTERS

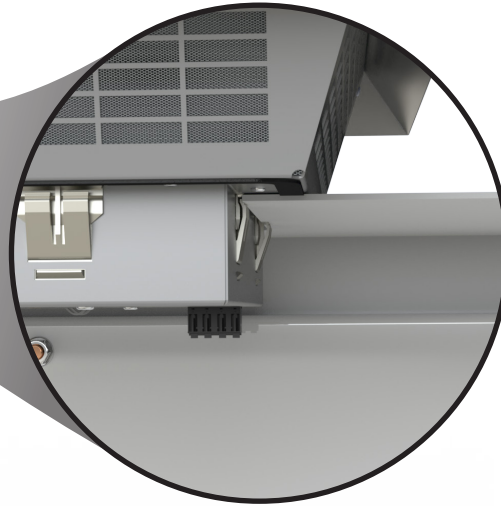
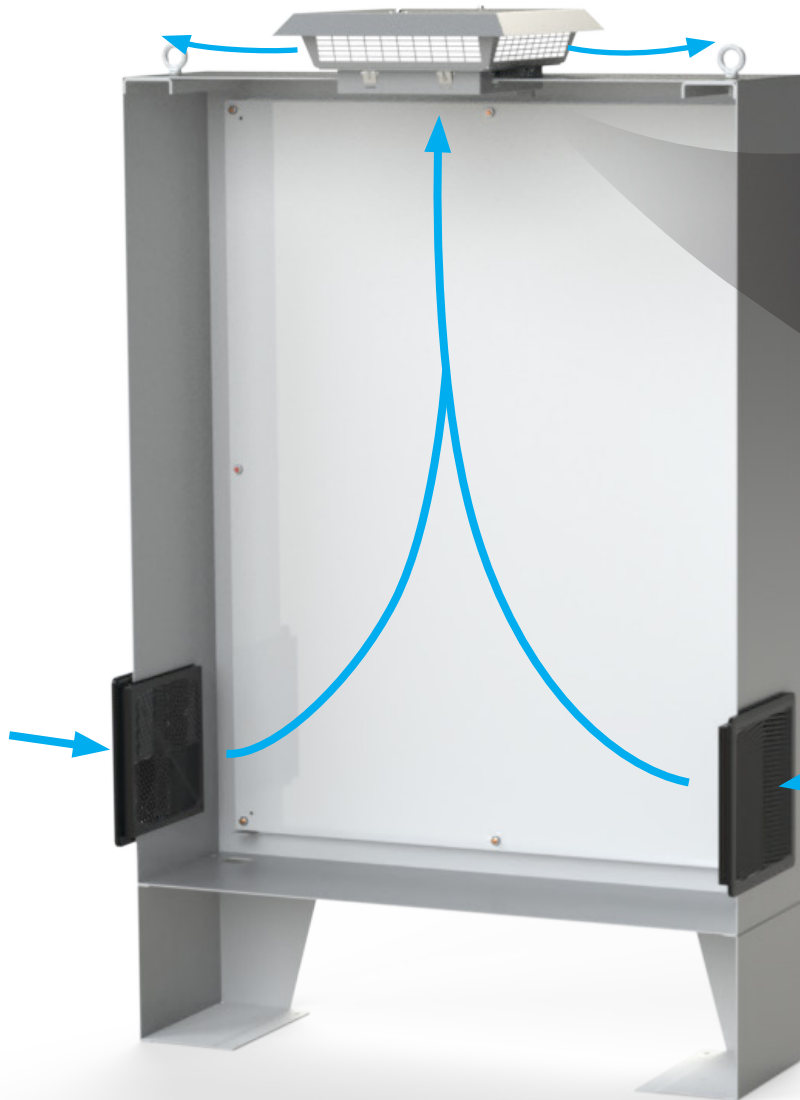
1. Remove screws on top.
2. Remove top.
3. Take old out filters.
4. Put new filters in.
5. Place top back on.
6. Replace screws.



For the duration of the replacement the unit must be disconnect from the electrical supply.

## BREAKDOWN





Clip mounting:  
To secure top mounted fan, push firmly on all four corners until click of the mounting clips can no longer be heard.

Screw mounting:  
Minimum tightening torque: 45 in-lb

## Air Direction

Standard flow allows cool air to come in through two SCE Nema 12 filters installed in lower part of enclosure, on both sides or door, and then push out the rising warmer air through the top mounted fan.

10" Nema 12 filters



SCE-N12FGA1010



SCE-N12FGA1010LG

\*Minimum qty 2 required for Type 12 applications