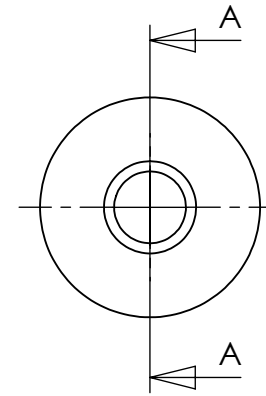
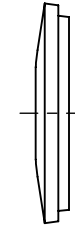


SEALING WASHERS

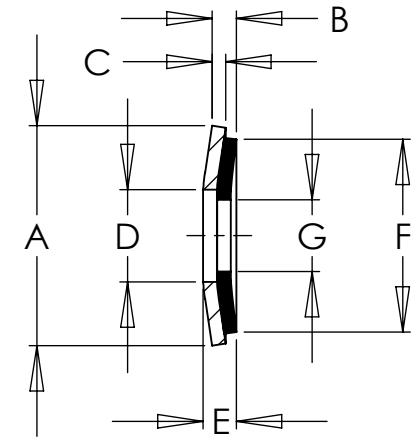
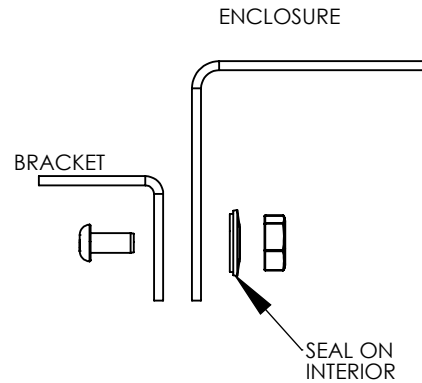
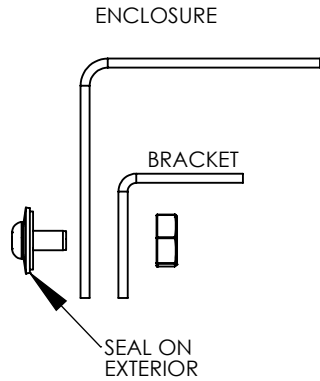
INTENDED FOR USE ON THE FLAT SURFACE OF ENCLOSURES RATED TYPE 2, 3, 3R, 3S, 4, 4X AND 12



METAL SIDE



RUBBER SIDE



SECTION A-A

SAGINAW CONTROL & ENGINEERING

SEALING WASHER ASSEMBLY DRAWING

Package Qty.	Purchase Part ID	Suitable to Seal Fastener Size	Material	A	B	C	D	E	F	G	Max Recommended Hole Size	Torque Range = (inch Lbs)	
				Ref	Ref	Ref	Ref	Ref	Ref	-0.015		Min	Max
50	115096	SCE-BSW38SS	Stainless	0.725	0.090	0.036	0.425	0.120	0.685	0.325	0.440	75	150
50	115097	SCE-BSW31SS	Stainless	0.625	0.090	0.036	0.330	0.110	0.575	0.275	0.344	25	100
50	115098	SCE-BSW25SS	Stainless	0.496	0.090	0.036	0.260	0.103	0.450	0.210	0.281	25	75
50	115099	SCE-BSW19SS	Stainless	0.496	0.090	0.036	0.260	0.103	0.450	0.180	0.250	25	75

SIZE A	DWG. NO. SealingWasher.SLDDRW	REV.
		SHEET 1 OF 1